



UNIVERSITY OF NORTH CAROLINA
CHARLOTTE

NEW STUDENT
ORIENTATION

Academic Overview

Transfer Student Success

Let's Talk Transfer!

What percentage of Charlotte's undergraduate students are transfer students?



A - Less than 10%



B - About 25%



C - About 35%



NEW STUDENT
ORIENTATION



*Transfer Enrollment in
North Carolina*



**NEW STUDENT
ORIENTATION**

Adjusting to Charlotte: What to Expect



What You Might Feel:

- New campus, new systems = temporarily overwhelming
- Different academic expectations
- A need to rebuild your support network

Adjusting to Charlotte: What to Expect

What We Want You to Know:

- You're not alone—many transfer students feel this way
- It's temporary—most students adjust by the end of the first semester
- You're not starting over—you're building on what you've already achieved
- Support is here - we're ready to help you succeed!

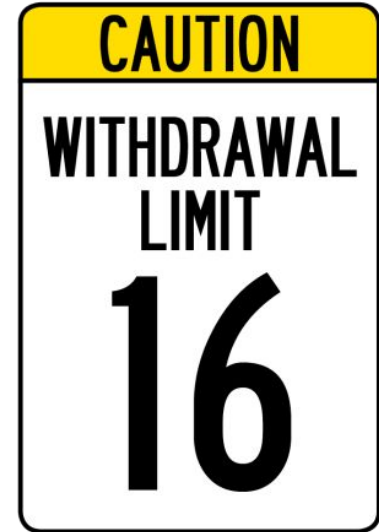


Tips for Success





Understand Academic Policies





Understand Academic Policies

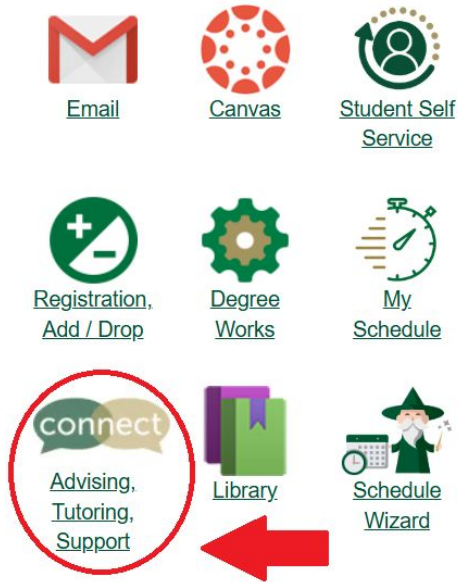


Grade Replacement Policy:

- 2 courses
(max 8 credit hours)
- Highest of 2 grades
calculated into GPA

Utilize Your Academic Support System

Student Quick Links



- Faculty
- Academic Advisors
- Dean of Students Office
- Niner Central
- Academic Support Services
 - University Center for Academic Excellence
 - Writing Resource Center



Maximize the Credits You've Earned

Send official transcripts from *every* college or university you've attended

- Before classes begin → send to Undergraduate Admissions
- After classes begin → send to the Office of the Registrar

Make sure your transcripts include your final grades

- Be sure to send an updated transcript after your final grades post

Earning an Associate's Degree?

- Make sure your final transcript shows the degree was awarded - Example: *Associate in Arts awarded on [date]*





Maximize the Credits You've Earned

You may be eligible for a general exemption if your final transcript indicates you have:

- Earned an Associate of Arts (AA) Associate of Science (AS), Associate of Engineering, (AE) Associate of Arts or Science in Teacher Preparation (AATP/ASTP) from a North Carolina Community College
- Earned an Associate in Arts (AA) or Associate in Science (AS) degree from a regionally accredited institution outside of NC
- Completed the general education requirements at another UNC System institution



Maximize the Credits You've Earned

Submit test scores (AP, IB, Cambridge, CLEP, etc.)

- Scores must come directly from the testing agency

Majoring in a program with a foreign language requirement?

- If you completed 3 levels in high school, send your high school transcript to Admissions

Think a course should count differently than listed?

- Talk with your academic advisor - you can submit an academic petition to have your transfer credit evaluated





/ Finding Community



NEW STUDENT
ORIENTATION



Tau Sigma - National Honor Society

- Eligibility:
 - 3.5 GPA in the first 12-15 credit hours at Charlotte
- Scholarship Opportunities
- Community and Social Engagement
- Leadership Opportunities





Honors Programs

- 30 Honors Programs
- 27 Discipline Specific
- Join after your first semester!



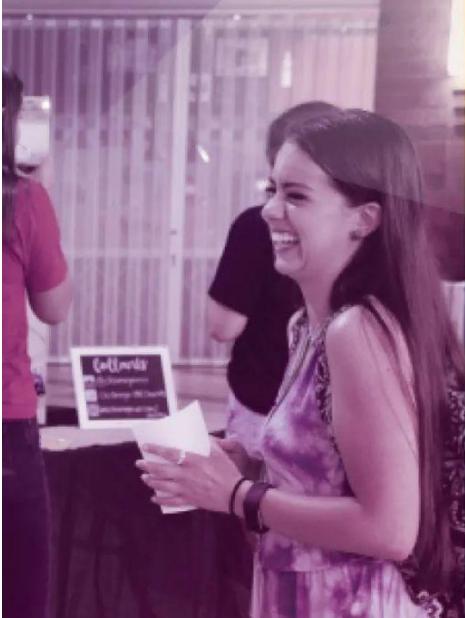
NEW STUDENT
ORIENTATION

Office of Undergraduate Research



NEW STUDENT
ORIENTATION

Student Organizations



400+

Registered
Student Organizations



NEW STUDENT
ORIENTATION

Questions?



University Transfer Center
transfercenter@charlotte.edu